



INDEPENDENT LIVING
MOVEMENT IRELAND

FREEDOM • RIGHTS • EMPOWERMENT

ILMI's role in developing Local DPOs

What is a Disabled Persons Organisation (DPO)?

- DPOs, unlike disability services providers, are led by, and 'with', a 100% disabled person-based membership.
- DPOs work on a cross-impairment labels basis with disabled adults from a Social model Disability-Equality approach.
- National and local DPOs should be the 'Go-To-Collective' corporeal ('real') body of disabled people that statutory, non-Statutory, media, cultural, sporting, economic, employment and social inclusion dialogues reach out directly to as the **genuine voice of the lived experiences** of disabled people.



What is a Disabled Persons Organisation (DPO)?

- DPOs are about bringing disabled people collectively together to bring about a more inclusive, equal and equitable society.
- DPOs are experts in enabling Ireland's effective realisation of our 2018 ratification of the United Nation's 2007 Convention on the Rights of Disabled People (UN CRPD).



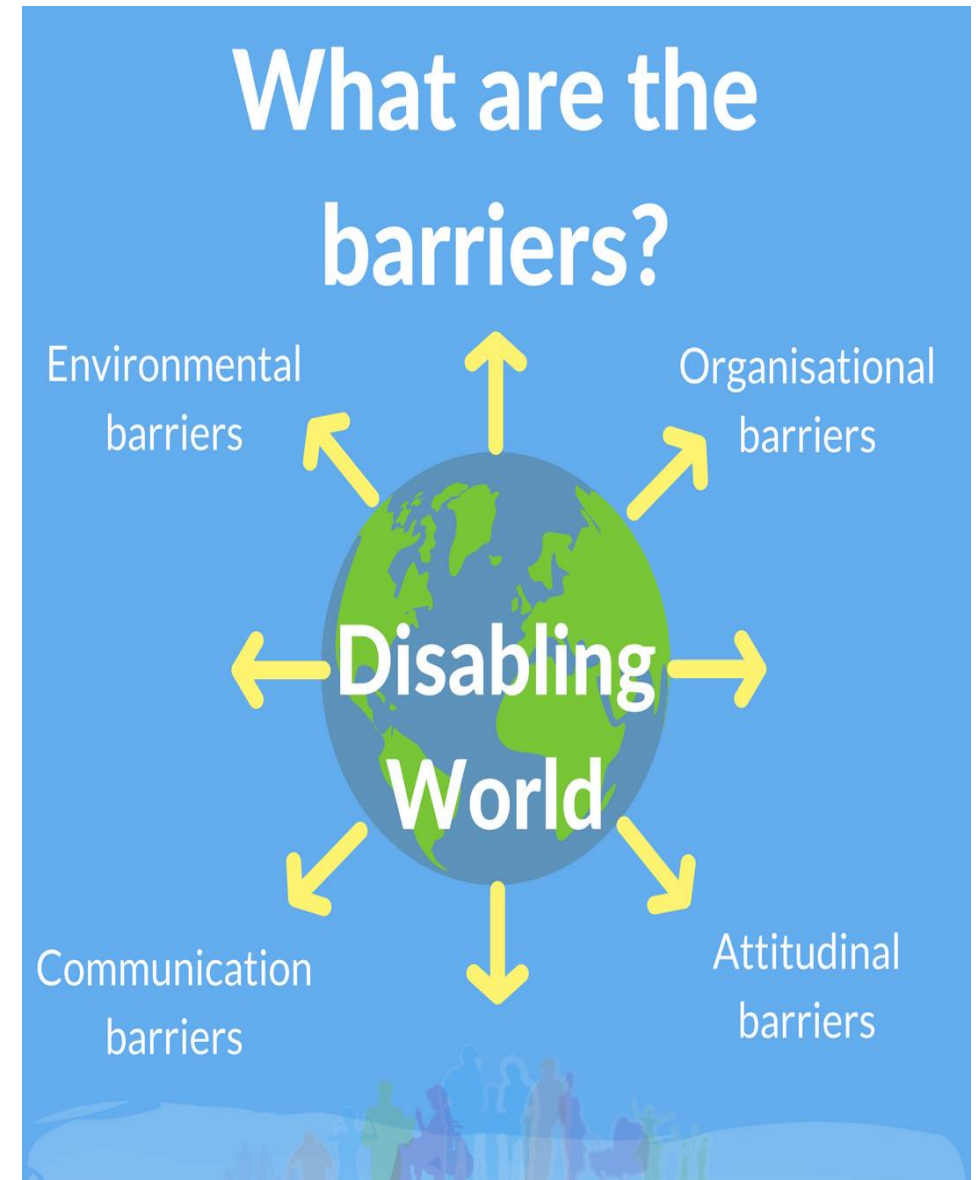
What is a Disabled Persons Organisation (DPO)?

- DPOs are collective spaces for, and always only 'with', disabled people –
- DPOs are *collectives* which are formally '*Constituted*' (documented membership, AGMs, consensus meetings, etc.) and informed through an equality, equity, human-rights and social model of disability organic 'bottom-up' approach.
- ILMI's supported local DPOs are *collectives* which are formally '*Constituted*' by the local membership and hold 'in-person' their AGMs in mainstream venues.



Why ILMI is developing local DPOs?

- Context for development of Local DPOs has been mandated at ILMI AGMs to be an essential aspect of our 2024 to 2027 Strategic Plan.
- ILMI is realising the UNCRPD 2018 Geneva DPO Declaration of definition and ideal structure for local Disability Equality led DPOs as grassroots collectives.
- ILMI supports local DPO capacity building through Community Development and Disability Equality approaches with the real voices of local lived experiences.



Why ILMI is developing local DPOs?

- ILMI's role is to make the UN CRPD relevant to local DPOs so they can inform, guide and direct local statutory & voluntary social systems (Councils, PPNs, HSE local committees, Area Partnerships/LEADER).
- The development of local DPOs is in keeping with the disability Equality spirit of the State's new 2025 National Disability Strategy designed with ILMI and other DPOs.



UK/Irish artist Marc Quinn made a series of marble sculptures of people either born with limbs missing. This culminated in his 15-ton marble statue of disability artist Alison Lapper - born with no arms and shortened legs - which was displayed on Trafalgar Square, London from September 2005 until October 2007 (The Fourth Plinth is used for rotating displays of sculpture.)

ILMI Strategic Objectives and DPOs

Local DPO related Strategic Priorities from the ILMI Strategic Plan 2024 – 2027 include:

- **Leadership and Representation, plus Governance and Accountability**

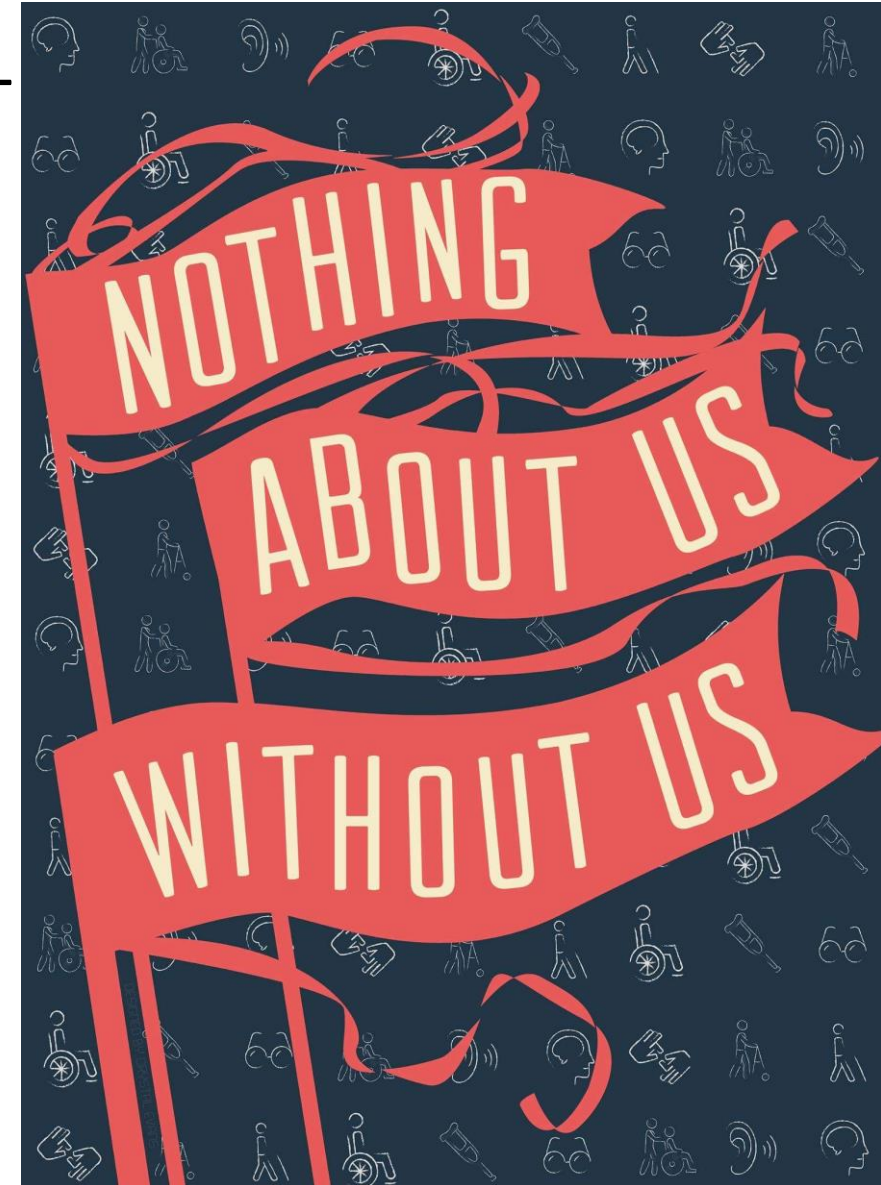
ILMI's work will continue to be led and represented by disabled people at all levels. ILMI will create collective structures, such as local DPOs, to generate disability equality informed evidence-based policies and expertise based on local disabled peoples lived experiences.

- **Promotion of equality and accessing human rights**

ILMI's work is grounded in equality and a strong social model 'rights-based' approach towards an inclusive Irish Society.

- **Political Campaigning and Strategic Policy Development**

ILMI will empower members to be active agents of social change by participating in collective strategic campaigns to promote independent living and ensure effective policy development and implementation.



Understanding *Disability*...via two Social Policy Engagement models

Medical Model of a Social Policy Engagement

- ‘Problem’ of *Disability* resides with Society’s response to curing or fixing or stabilizing impairment labels – such perceived ‘labels’ overshadow individual’s class, gender, ethnic, etc..
- The medical model lived experience narrative is concerned with an individual’s ‘lack of ability or function’ to carry out so-called **Normal** activities – it is about the individual and their impairment having to change or be changed by medications or operations.
- The medical model ‘Solution’ is about curing & stabilizing the impairment and treating the ‘victim’ or ‘sufferer’ of an impairment label led **Inspirational** story and Charity model perspective.



Understanding *Disability*...via two Social Policy Engagement models

Social Model DPO Collective Policy & LIVED EXPERIENCES

- 'Problem' of disability resides within the environment - disabled people are the 'experts' in sharing their lived experience of physical, social, political, attitudinal Society made barriers.
- A DPO 'solution' is to alter the environments and disabling systems by listening and hearing their members social model informed collective lived experience and narrative.
- DPOs capacity build disabled people to effectively choose to be in the mainstream and own the means of process and product of showing and telling their own lived experience stories.



A portrait of UK artist Sophie Morgan, by Tanya Raabe, 2011. Raabe is one of the key portrait painters of the disability arts movement.

Ireland's General obligations impacting on DPO informed Social Policy (UN CRPD Article 4)

Following Ireland's 2018 Ratification of the UN CRPD the State must engage with UN 2018 Geneva Declaration definition of DPOs, such as ILMI, to:

- Take all adequate measures to implement the 2007 UN CRPD with national and local DPOs
- DPOs to be directly involved in making sure that State legal and administrative frameworks as well as all public entities do not discriminate or oppress disabled people
- Protect disabled people from discrimination and oppression by non-state actors
- Provide information to disabled people on possible support to engage with national and local democratic and political structures
- Consult disabled people and their representative DPOs on all matters related to UN CRPD implementations

THE CONVENTION ON THE RIGHTS OF PERSONS WITH DISABILITIES (CRPD)

ACCESSIBILITY

FULL AND EFFECTIVE PARTICIPATION

ARTICLE 16: FREEDOM FROM EXPLOITATION, VIOLENCE AND ABUSE

INDEPENDENCE OF PERSONS

ARTICLE 21: FREEDOM OF EXPRESSION AND OPINION, AND ACCESS TO INFORMATION

ARTICLE 19: LIVING INDEPENDENTLY AND BEING INCLUDED IN THE COMMUNITY

EQUALITY OF OPPORTUNITY

ARTICLE 28: ADEQUATE STANDARD OF LIVING AND SOCIAL PROTECTION

FULL INCLUSION IN SOCIETY

ARTICLE 27: WORK AND EMPLOYMENT

EQUALITY BETWEEN MEN AND WOMEN

ARTICLE 30: PARTICIPATION IN CULTURAL LIFE, RECREATION, LEISURE AND SPORT

RESPECT FOR INHERENT DIGNITY

ARTICLE 23: RESPECT FOR HOME AND THE FAMILY

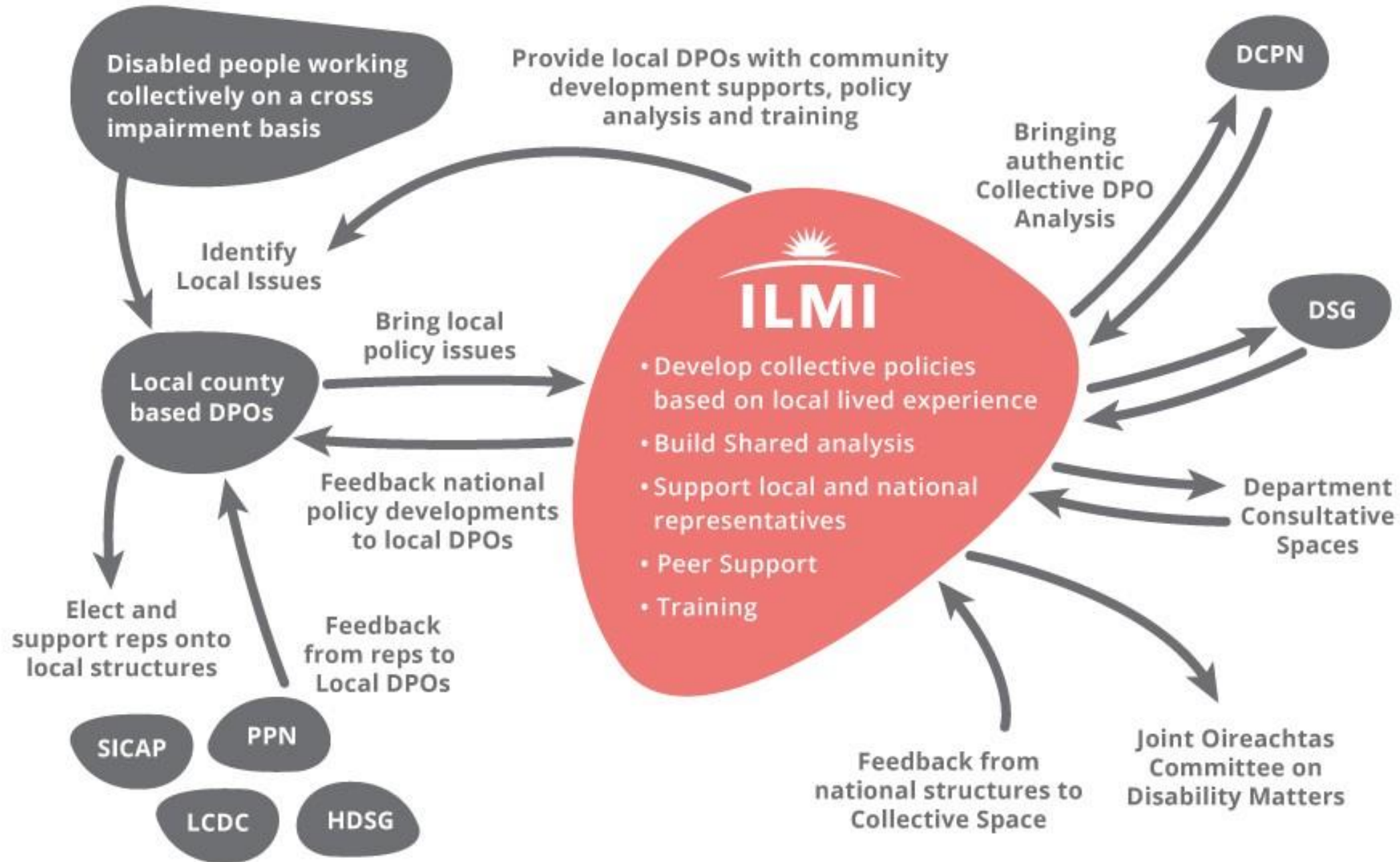
NON-DISCRIMINATION

NOTHING ABOUT US, WITHOUT US!

USICD is a non-profit membership organization that works to catalyze the energy, expertise and resources of the US disability community and US government to help improve the lives and circumstances of people with disabilities worldwide. www.usicd.org

CRPD CONVENTION ON THE RIGHTS OF PERSONS WITH DISABILITIES

USICD U.S. International Council on Disabilities



What would ILMI want a local DPO to do?

Local DPOs will work with the ILMI's social model informed Values system – that means a local DPO should be a cross impairment collective, non-impairment hierarchical and a strong **Intersectional** recognition of diversity (socioeconomic status, gender, sexuality, ethnicity etc) and will:

- Work collectively on a shared social model analysis to become the local representative space
- Work collectively on local issues to inform effective social inclusion
- Engage with ILMI policy discussions to connect the local to National policy development processes and vice versa



ILMI and future development of Local DPOs



ILMI is committed to supporting the development of Local DPOs across the country with values consistent to ILMI and we are also:

- Committed to developing local structures to support authentic, collective voices to represent the views of disabled people.
- Supportive of local DPOs to feed information into national discussions on policy.
- Interested in ensuring policy and campaign discussions at a national level can feed back into Local DPOs
- Ensuring collective national campaigns on disability equality can be led out by DPOs locally.



INDEPENDENT LIVING MOVEMENT IRELAND

FREEDOM • RIGHTS • EMPOWERMENT

For More information, visit our
website

www.ilmi.ie

